



**Epilog**Laser



# OVER 30 YEARS OF EXPERIENCE

---



Epilog Laser Headquarters in Colorado, United States

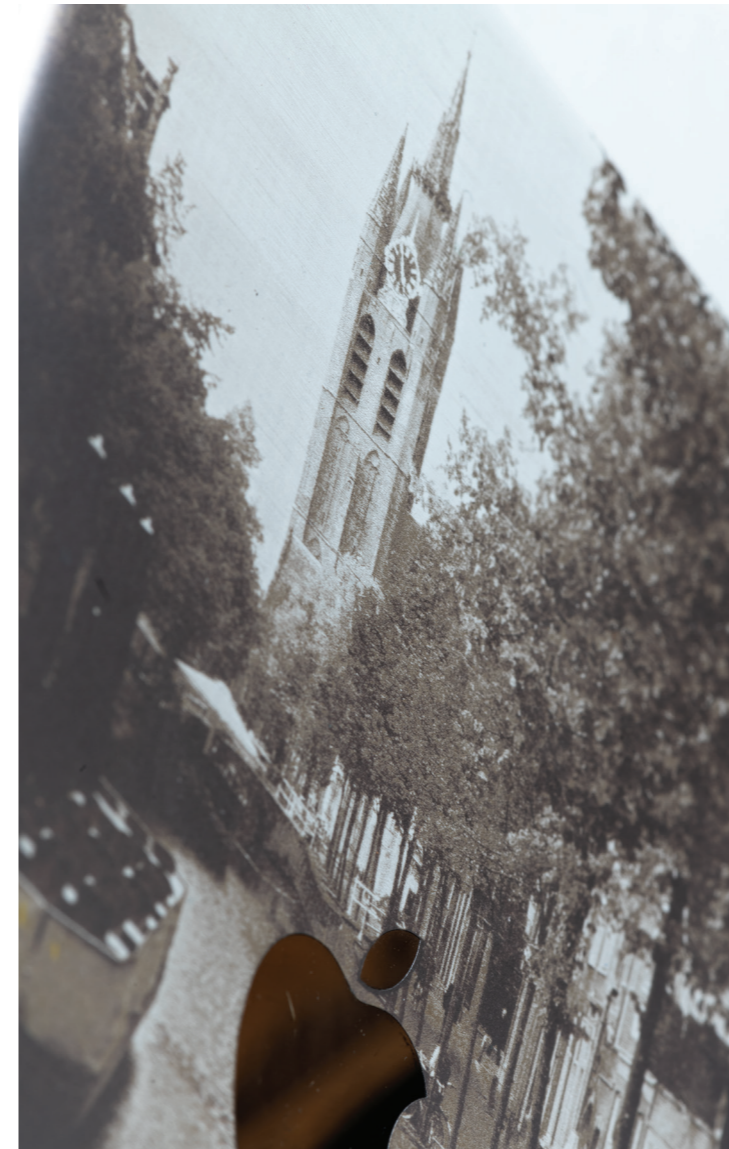


Epilog Laser European Headquarters in Houten, Netherlands

In 1988, Epilog Laser's revolutionary systems opened the world's eyes, not only to what could be accomplished with a laser, but also to how accessible a laser is to businesses, both large and small.

We are innovators. We are engineers. We are problem solvers. We are committed to designing and manufacturing the highest-quality, fastest laser systems in the industry, right here from our global headquarters in Golden, CO, in the foothills of the Rocky Mountains.

Our worldwide presence continues to grow with corporate offices located in the Netherlands and Canada. We now have even more locations to provide you with the highest level of support and convenience. Contact us to schedule a hands-on demonstration from your local distributor and see how an Epilog Laser can benefit your business with the industry's highest engraving speeds, the most-detailed etching, and fast, accurate cutting. Find out how an Epilog Laser can transform your business.





# ENGRAVE – CUT – MARK

Electronics Engraving  
Wood Engraving & Cutting  
Marble & Stone Etching  
Acrylic & Wood Signage  
Nameplates & Desk Sets  
Wedding Memorabilia  
Corporate Giveaways  
Glass Etching  
Sporting Goods

Holiday Ornaments  
Corporate & Sporting Awards  
Architectural Models  
One-of-a-Kind Gifts  
Greeting Cards  
Guitar Inlays  
Custom Jewelry  
Acrylic Plaques  
Photo Frames

3D Models  
Inlaid Signage  
Photo Engraving  
Barcode Engraving  
Engraved Denim Jeans  
Logo Engraving on Parts  
Etched Business Cards  
Tool Identification  
Medical Part Marking

Laptop Customization  
Paper Invitations  
Marble Flooring  
Cloth Etching  
Memorials  
Home Decor  
Cabinetry  
Product Marking  
Industrial Etching

Phone Customization  
Custom Pet Tags  
Appliqués  
Toys & Games  
Photo Albums  
Wine Bottle Etching  
Engraved Mirrors  
Photo Etching  
And much more!

# CHOOSE YOUR LASER

## CO<sub>2</sub>: Versatility

Engrave and cut a wide variety of materials with our CO<sub>2</sub> laser line. A CO<sub>2</sub> laser system can engrave on all kinds of materials, including wood, acrylic, rubber, plastic, and more.

	Engrave	Cut
Wood	•	•
Acrylic	•	•
Glass	•	
Coated metals	•	
Ceramics	•	
Delrin	•	•
Cloth	•	•
Leather	•	•
Marble	•	
Matboard	•	•
Melamine	•	•
Paper	•	•
Mylar	•	•
Cardboard	•	•
Rubber	•	•
Wood veneer	•	•
Fiberglass	•	•
Painted metals	•	
Tile	•	
Plastic	•	•
Cork	•	•
MDF	•	•
Anodized aluminum	•	
Twill	•	•
Stainless steel	‡	
Brass	‡	
Titanium	‡	
Bare metal	‡	

‡ CO<sub>2</sub> lasers will mark bare metals when coated with a metal marking solution.

## Fiber: Metal Etching

Featuring an air-cooled ytterbium fiber laser source, these are the ideal systems for direct metal etching and marking, as well as marking engineered plastics.

### Compatible Materials:

ABS (black/white)  
Aluminum 6061  
Aluminum, yellow chromate  
Anodized aluminum  
Bayers bayblend FR110  
Brass  
Brushed aluminum  
Carbon fiber  
Carbon nanotube  
Ceramics  
Ceramics, metal-plated  
Cobalt chrome steel  
Copper  
DAP- Diallyl Phthalate  
Delrin, colored (black/brown)  
GE Plastics polycarbonate resin  
Hard coat anodized aluminum  
Inconel metals (various)  
Iron-phosphate coating  
Machine tool steel  
Magnesium  
Makrolon  
Makrolon 2807  
Molybdenum

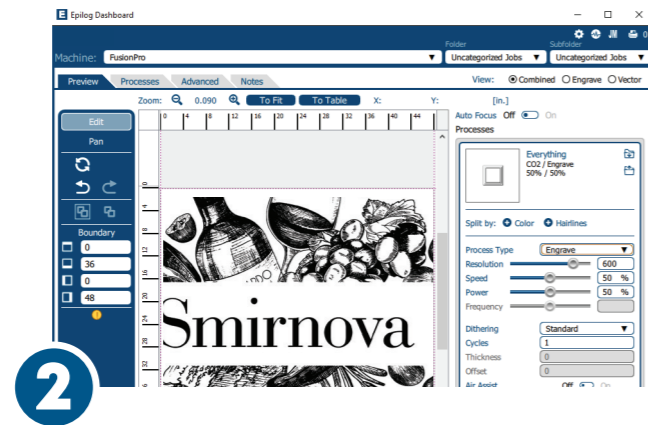
Nickel-plated 1215 mild steel  
Nickel-plated brass  
Nickel-plated gold  
Nickel-plated Kovar  
Nickel-plated steel  
Nylon  
PEEK, white & glass filled  
Polybutylene Terephthalate  
Polycarbonate, (black/white)  
Polycarbonate resin 121-R  
Polysulfone  
Rynite PET  
Santoprene  
Silicon carbide  
Silicon steel  
Silicon wafers  
Stainless steel 303  
Stainless steel 17-4 PH  
Steel 4043  
Steel, machine tool  
Teflon, glass filled  
Various inconel metals  
Zinc-plated mild steel  
And many more!

# EASY PROJECT SETUP

## From Design to Finished Product



1 Design your graphic in your favorite graphic design software.



2 Print the design to the Epilog Laser Dashboard™.



3 Choose your settings and start engraving or cutting your design.

## Material Settings Library

Epilog's Material Settings Library is your first stop for finding the perfect settings for most materials. This parameter library has been built by testing materials to find the best settings for you to use with your laser system. If you discover your own preferred settings, or have a special material that you use with your laser, save your custom settings so you always have access to your favorite laser parameters at the touch of a button.

## Online Training

Register your machine at our free online training suite, [training.epiloglaser.com](http://training.epiloglaser.com) and start learning the latest tips and tricks on project setup and more. Featuring walkthrough demonstrations of how to set up projects, articles on maintenance for your machine, and a thorough library of support videos, the Epilog Laser Training Suite is your online manual for learning how to make the most of your laser system.

## IRIS™ Camera Positioning & Job Trace

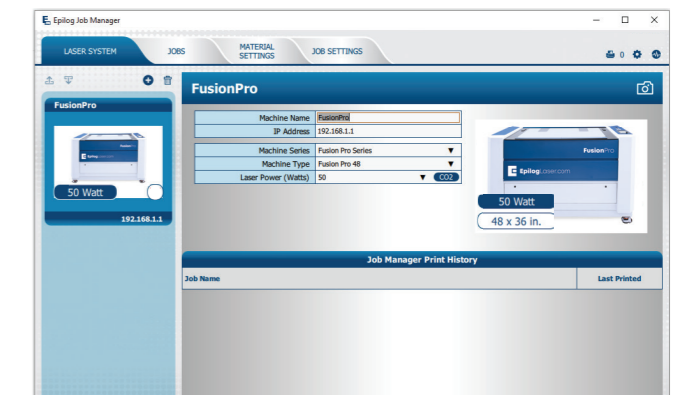
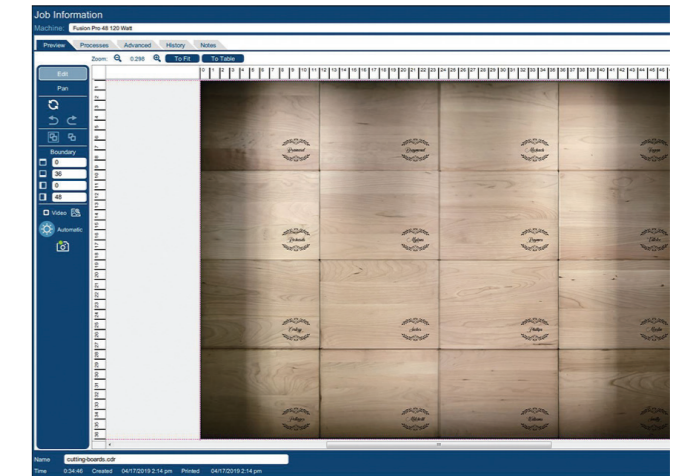
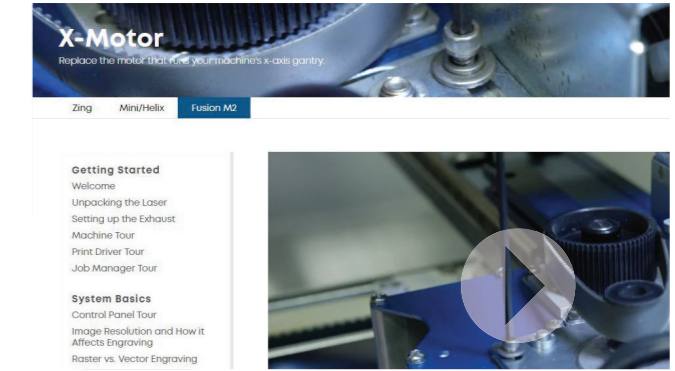
Positioning your image for engraving has never been easier. The Fusion Edge and Fusion Pro's IRIS™ multi-camera system shows your laser's table on screen in the Laser Dashboard™, allowing you to precisely position your image on screen, then print to the laser. You can also use the camera at the laser head on the Fusion Pro to recognize registration marks in your artwork for extremely precise engraving on preprinted pieces. To ensure your engraving is precisely positioned, run the instant Job Trace to see exactly where your image will be engraved on your product.

## Fastest Engraving Speeds: Up to 4.2 m/s

Higher-speed engraving means more throughput for your business. Epilog prides itself on creating machines with incredibly fast engraving times and the quickest turnaround speeds, while still providing the highest quality results. The Fusion Pro's motion control system allows the laser to reach a top speed of 4.2 m/s with 5g acceleration for the industry's fastest engraving. Extremely robust motors and an industrially designed motion control system allow us to reach the highest engraving speeds while still providing the high-resolution you expect from an Epilog Laser system.

## Epilog Software Suite™

Epilog's powerful software suite allows you to position your artwork and duplicate your image across the screen, and access our materials database quickly and easily. Save your files to the Job Manager and you can access any job you have ever sent to the laser. Organize your jobs, rerun projects, and more.



# FUSION MAKER LASERS



## FUSION MAKER 12

- Available in CO<sub>2</sub>
- 30 or 40 watt CO<sub>2</sub> laser
- 610 x 305 x 178 mm work area
- IRIS Single Overhead Camera



## FUSION MAKER 24

- Available in CO<sub>2</sub>
- 40 watt CO<sub>2</sub> laser
- 610 x 610 x 254 mm work area
- IRIS™ Dual Overhead Cameras



## FUSION MAKER 36

- Available in CO<sub>2</sub>
- 40 or 50 watt CO<sub>2</sub> laser
- 914 x 610 x 254 mm work area
- IRIS™ Dual Overhead Cameras

## Low-Cost, High Performance

The Fusion Maker combines the highest-quality components, an industrial-build quality, and the latest features from Epilog as the first low-cost, high-performance laser system on the market.

Whether you're starting a new business, have an established business and want to increase your capabilities, or are a hobbyist, the Fusion Maker is an ideal choice!

The Fusion Maker includes Epilog's IRIS™ camera positioning features, a touch-screen display that lets you control the laser from the machine, and SAFEGUARD™ features to keep the machine clean and dust-free for less maintenance. Find out why the Fusion Maker is such an exciting addition to Epilog's product line!

## System Features

	Maker 12	Maker 24	Maker 36
Made-in-the-USA Quality: Designed, engineered & built in Golden, CO	•	•	•
Epilog Job Manager™: Management & workflow software - easily organize, edit, save & print	•	•	•
3.5g System Acceleration: Fast acceleration to top speed	•	•	•
IRIS™ Camera Positioning: Overhead camera for easy artwork positioning	•	•	•
SAFEGUARD™ features: Keep the mechanics clean and dust-free	•	•	•
Touch-Screen Control: File selection, auto-focus, and more	•	•	•
Air Assist: Remove heat & combustible gases from the cutting surface	•	•	•
Networking Choices: USB, Ethernet & Wireless connections	•	•	•
Permanent Job Storage (1 GB): Keep your most-run jobs at the machine	•	•	•
Auto Focus: Automatically focus the table to the correct focal distance	•	•	•
Software Suite: Dashboard™ and Epilog Job Manager™ Software Package	•	•	•
CO <sub>2</sub> , air-cooled, metal/ceramic laser tube, 10.6 micrometers	•	•	•
Air Flow: Streamlined air flow for the most efficient smoke and vapor removal	•	•	•
Radiance™ Beam-Enhancing Optics: Higher resolution optics for detailed engraving	•	•	•
Red Dot Pointer: Provides a visible laser beam to help position your projects	•	•	•
Job Trace: Quickly see where the job will engrave on your material	•	•	•
Super-Silent™ Cooling Fans: Quiet operation suitable for office environments	•	•	•
Rim-Style and 3-Jaw Chuck Rotary Compatibility	•	•	•
High-Speed Stepper Motors: Provides highly accurate, fast engraving	•	•	•



# FUSION EDGE LASERS



## FUSION EDGE 12

- Available in CO2 or fiber
- 50 or 60 watt CO2 laser
- 30 watt fiber laser
- 610 x 305 x 178 mm work area
- IRIS™ Single Overhead Camera



## FUSION EDGE 24

- Available in CO2
- 50 or 60 watt CO2 laser
- 610 x 610 x 254 mm work area
- IRIS™ Dual Overhead Cameras



## FUSION EDGE 36

- Available in CO2
- 60, 80 or 100 watt CO2 laser
- 914 x 610 x 254 mm work area
- IRIS™ Dual Overhead Cameras

## IRIS™ Camera Positioning

Position your artwork directly on your item using the overhead camera system of the Fusion Edge. Artwork can be quickly duplicated on screen, positioned on your product, and engraved in minutes. It's the fastest method of artwork set up available.

- Drag & drop functionality for positioning artwork
- Duplicate artwork, resize it, and select cut lines on screen
- Quickest and easiest positioning system



## System Features

	Edge 12	Edge 24	Edge 36
Made-in-the-USA Quality: Designed, engineered & built in Golden, CO	•	•	•
Epilog Job Manager™: Management & workflow software - easily organize, edit, save & print	•	•	•
5g System Acceleration: Fast acceleration to top speed	•	•	•
IRIS™ Camera Positioning: Overhead camera(s) for easy artwork positioning	•	•	•
SAFEGUARD™ features: Keep the mechanics clean and dust-free	•	•	•
Touch-Screen Control: File selection, auto-focus, and more	•	•	•
Air Assist: Remove heat & combustible gases from the cutting surface	•	•	•
Networking Choices: USB, Ethernet & Wireless connections	•	•	•
Permanent Job Storage (1 GB): Keep your most-run jobs at the machine	•	•	•
Auto Focus: Automatically focus the table to the correct focal distance	•	•	•
Software Suite: Dashboard™ and Epilog Job Manager™ Software Package	•	•	•
CO2, air-cooled, metal/ceramic laser tube, 10.6 micrometers	•	•	•
or fiber laser Source, 1064 nm	•		
Radiance™ Beam-Enhancing Optics: Higher resolution optics for detailed engraving	•	•	•
Air Flow: Streamlined air flow for the most efficient smoke and vapor removal	•	•	•
High-Speed, Brushless DC Servo Motors: Withstands rigorous engraving jobs at high speeds	•	•	•
Red Dot Pointer: Provides a visible laser beam to help position your projects	•	•	•
Job Trace: Quickly see where the job will engrave on your material	•	•	•
Removable Front Panel: Easy access to the crumb tray	•	•	•
Super-Silent™ Cooling Fans: Quiet operation suitable for office environments	•	•	•
Rim-Style and 3-Jaw Chuck Rotary Compatibility	•	•	•

# FUSION PRO LASERS



## FUSION PRO 24

- Available in CO<sub>2</sub>, fiber, or dual-source
- 60 or 100 watt CO<sub>2</sub> laser
- 30 watt fiber laser
- 30 fiber / 60 CO<sub>2</sub> or 50 fiber / 100 CO<sub>2</sub> dual laser
- 610 x 610 x 228 mm work area
- IRIS™ Dual Overhead Cameras
- IRIS™ Registration Camera

## FUSION PRO 36

- Available in CO<sub>2</sub> or dual-source
- 60, 80, 100 or 120 watt CO<sub>2</sub> laser
- 30 fiber / 80 CO<sub>2</sub> or 50 fiber / 100 CO<sub>2</sub> dual laser
- 914 x 610 x 228 mm work area
- IRIS™ Dual Overhead Cameras
- IRIS™ Registration Camera

## FUSION PRO 48

- Available in CO<sub>2</sub> or dual-source
- 80 or 120 watt CO<sub>2</sub> laser
- 50 fiber / 120 CO<sub>2</sub> dual laser
- 1219 x 914 x 311 mm work area
- IRIS™ Dual Overhead Cameras
- IRIS™ Registration Camera

## Industry's Highest-Speed Engraving

Introducing the fastest laser engraving systems on the market. Performance and image quality are at the heart of the Fusion Pro line of laser systems. With a maximum speed of 4.2m/s, and featuring 5g acceleration, the Fusion Pro lasers are the fastest, most productive laser systems available. Whether you're engraving wood, plastic, coated metals, or glass, the Fusion Pro allows you to produce more product in less time than any competitive system.

## IRIS™ Camera Positioning

Positioning your artwork is easier than ever with the IRIS™ Camera Positioning feature of the Fusion Pro. Overhead cameras provide a view of your material as it is positioned on the table, allowing you to accurately place your artwork and know exactly where your laser will engrave. A camera at the lens assembly allows you to locate registration marks on your artwork for precise cutting and engraving.

## System Features

	Pro 24	Pro 36	Pro 48
Made-in-the-USA Quality: Designed, engineered & built in Golden, CO	•	•	•
High Speed Engraving: Max speed of 4.2 m/s	•	•	•
5g System Acceleration: Fast acceleration to top speed	•	•	•
IRIS™ Camera Positioning: Overhead cameras & camera at the carriage for artwork positioning	•	•	•
SAFEGUARD™ features: Keep the mechanics clean and dust-free	•	•	•
Touch-Screen Control: File selection, auto-focus, and more	•	•	•
Air Assist & Compressor: Remove heat & combustible gases from the cutting surface	•	•	•
Vacuum Hold-Down Table: Exhaust under the table	•	•	•
Networking Choices: USB, Ethernet & Wireless connections	•	•	•
Permanent Job Storage (1 GB): Keep your most-run jobs at the machine	•	•	•
Auto Focus: Automatically focus the table to the correct focal distance	•	•	•
Software Suite: Dashboard™ and Epilog Job Manager™ Software Package	•	•	•
CO <sub>2</sub> , air-cooled, metal/ceramic laser tube, 10.6 micrometers	•	•	•
or fiber laser Source, 1064 nm	•		
or Dual Source configuration	•	•	•
Radiance™ Beam-Enhancing Optics: Higher resolution optics for detailed engraving	•	•	•
Laminar Air Flow: Streamlined air flow for the most efficient smoke and vapor removal	•	•	•
High-Speed, Brushless DC Servo Motors: Withstands rigorous engraving jobs at high speeds	•	•	•
Red Dot Pointer: Provides a visible laser beam to help position your projects	•	•	•
Job Trace: Quickly see where the job will engrave on your material	•	•	•
Easy-Access Drop-Down Door: Front access door for the laser system	•	•	•
Super-Silent™ Cooling Fans: Quiet operation suitable for office environments	•	•	•
Rim-Style and 3-Jaw Chuck Rotary Compatibility	•	•	•



# FUSION GALVO LASER

## FUSION GALVO G100

Compact, efficient etching and marking of metals. Etch bar codes, logos, serial numbers and more.

- Includes lenses for 101 x 101 mm and 152 x 152 mm engraving fields
- IRIS™ dual overhead cameras
- Automated door
- Affordably priced metal etcher
- Touch screen display panel



## Two Lenses, Two Cameras, Two Field Choices

The Fusion Galvo includes both F163 and F254 lenses to move seamlessly between a 101.6 x 101.6 mm and 152.4 x 152.4 mm engraving area. Two cameras above the engraving field automatically adjust for the installed lens, providing you with more choices for how you can achieve the perfect engraving results that are accurately positioned every time.

## System Features

	Galvo G100
Made-in-the-USA Quality: Incorporates the most advanced galvo technology, and is designed, engineered & built in Golden, CO	•
Software Interface: Print from most CAD and graphic software packages to the Epilog Dashboard™	•
Multiple Lenses Included: Choose between F163 and F254 changeable lenses	•
Design your next project while the laser is operating	•
IRIS™ Camera Positioning: Overhead camera for easy artwork positioning	•
Touch Screen Control: File selection, focus the laser, trace the marking area, rerun jobs, and more	•
Networking Choices: USB, Ethernet & Wireless connections	•
Permanent Job Storage (1 GB): Keep your most-run jobs at the machine	•
Auto Focus: Automatically focus the table to the correct focal distance	•
Software Suite: Dashboard™ and Epilog Job Manager™ Software Package	•
Fiber, air-cooled laser, 1064 nm	•
Red Dot Pointer: Provides a visible laser beam to help position your projects	•
Job Trace: Quickly see where the job will engrave on your material	•
Automated Mechanical Door: Automated door closes when the job begins and opens when finished	•
Fixture Plate: Built-in, threaded fixture plate	•
Multiple Files: Choose between all files you have sent to the laser	•
Integrated Exhaust Controller: Automatically cycle on and off many popular exhaust systems	•
Rotary Attachment Compatibility	•





# ACCESSORIES

## Air Compressor

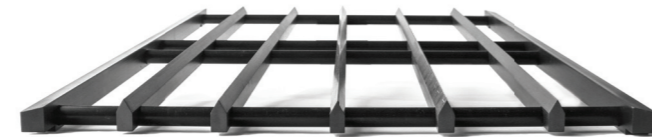
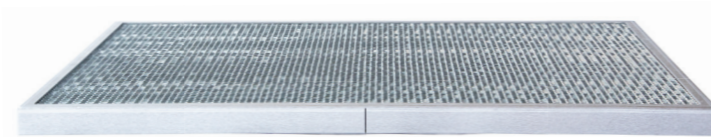
Epilog's optional Air Compressor is available to work with the included Air Assist feature of the laser systems. Direct a constant stream of air to your cutting surface to remove heat and combustible gases from the work area. This high-quality air compressor unit feeds 30 psi (2.07 bar) of air through the Air Assist structure, giving you the best cutting results available. The vibration-dampening rubber feet reduce the noise level of the compressor.



## Cutting Tables

Incorporate the gridded cutting table when cutting through materials. By raising the materials off of the table when cutting, you'll be able to reduce any back-side burning on the material.

For cutting through materials on the Fusion Pro, choose between a traditional cutting-grid table or a slat table.



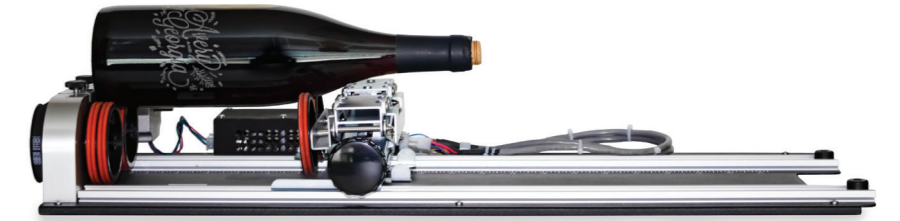
## Machine Stand

Add the machine stand to your Fusion Edge 12 to turn your desktop laser into a free-standing unit. This optional stand features high-quality wheels to move the laser system throughout your work area with ease, and the shelf makes a great place to store your most used materials.



## Rotary Attachments

Add the ability to engrave cylindrical items to your laser, including glasses, bottles, and more. Epilog offers two types of Rotary Attachments. The Standard Rim-Style Rotary is great for general-purpose cylindrical shapes, including glasses, mugs and wine bottles. We offer the 3-Jaw Chuck Rotary Attachment for more demanding applications when you need to mechanically clamp a cylinder or oddly shaped, non-cylindrical item.



## Lens Options

1.5" Lens: Highest-Resolution Engraving

Although the standard 2.0" lens provides amazing detail, our 1.5" lens assembly has been designed for the highest-resolution engraving and etching of extremely small fonts.



4.0" Lens: Cutting Thicker Materials and Inside Deep Areas

The 4.0" lens produces a focused beam over a longer vertical distance, which makes it ideal when engraving within a recessed area of a product, such as inside a bowl or plate. The lens is also useful for cutting through very thick materials with a more elongated beam.



## Pin Table

The Pin Table incorporates moveable pins designed to raise and support material during cutting. This helps ensure you receive the cleanest laser cut edges from your laser machine. Use the Pin Table with the Fusion Pro's IRIS™ camera system for a visual representation of each pin's precise location for the highest quality edge cuts on a laser system.



# TECH SPECS



	Fusion Maker 12 (CO <sub>2</sub> )	Fusion Maker 24 (CO <sub>2</sub> )	Fusion Maker 36 (CO <sub>2</sub> )	Fusion Edge 12 (CO <sub>2</sub> )	Fusion Edge 12 (Fiber)	Fusion Edge 24 (CO <sub>2</sub> )	Fusion Edge 36 (CO <sub>2</sub> )
Work Area	610x305mm	610x610mm	914x610mm	610x305mm		610x610mm	914x610mm
Max Material Thickness	178mm	254mm	254mm	178mm		254mm	254mm
Laser Tube Wattages	30 or 40 watt, CO <sub>2</sub> air-cooled, metal/ceramic tube, 10.6 micrometers	40 watt, CO <sub>2</sub> air-cooled, metal/ceramic tube, 10.6 micrometers	40 or 50 watt, CO <sub>2</sub> air-cooled, metal/ceramic tube, 10.6 micrometers	50 or 60 watt, CO <sub>2</sub> air-cooled, metal/ceramic tube, 10.6 micrometers	30 watt fiber, air-cooled, includes collimator. 1064nm. Beam quality: M2 < 1.1.	50 or 60 watt, CO <sub>2</sub> air-cooled, metal/ceramic tube, 10.6 micrometers	60, 80 or 100 watt, CO <sub>2</sub> air-cooled, metal/ceramic tube, 10.6 micrometers
Software	Laser Dashboard™, Epilog Job Manager™						
Memory	Multiple files up to 1GB. Engrave any file size						
Motion Control	High-speed stepper motors			High-speed, continuous-loop, brushless DC servo motors on the x-axis using rotary encoding technology for precise positioning			
X-Axis Bearings	Ground & polished stainless steel, teflon-coated, self-lubricating bearings						
Belts	Advanced B-style double-wide Kevlar precision drive belts						
Resolution	User-controlled 75-1200dpi						
Speed & Power	1.5m/s with 3.5G acceleration. Computer-controlled in .001 increments up to 100%. Color mapping feature links Speed, Power, Frequency, and Raster/Vector mode			3.05m/s with 5G acceleration. Computer-controlled in .001 increments up to 100%. Color mapping feature links Speed, Power, Frequency, and Raster/Vector mode			
Print Interface	USB, Wireless, & 10Base-T Ethernet connections. Windows 7/8/10/11 compatible						
Size (W x D x H)	1003x673x455mm	1055x834x967mm	1359x833x966mm	1003x673x455mm		1055x834x967mm	1359x833x966mm
Weight	63kg	102kg	117kg	63kg		102kg	117kg
Electrical	Auto-switching power supply 100-240volts, 50 or 60Hz, single phase. 13 Amp draw-MAX for 100-120 volts. 6.5 Amp draw-MAX for 220-240 volts.						
Ventilation System	350-400CFM (595-680m <sup>3</sup> /hr) external exhaust to outside or internal filtration unit required. One output port, 102mm in diameter						
Class	Class 2 Laser Product - 1 mW CW MAXIMUM 600-700nm						



	Fusion Pro 24 (CO <sub>2</sub> )	Fusion Pro 24 (Fiber/Dual)	Fusion Pro 36 (CO <sub>2</sub> )	Fusion Pro 36 (Dual)	Fusion Pro 48 (CO <sub>2</sub> )	Fusion Pro 48 (Dual)	Fusion Galvo G100 (Fiber)
Work Area	610x610mm		914x610mm		1219x914mm		F163: 101x101mm F254: 152x152mm
Max Material Thickness	228mm				311mm		F163: 254mm F254: 152mm
Laser Tube Wattages	60 or 100 watt, CO <sub>2</sub> air-cooled, metal/ceramic tube, 10.6 micrometers	Fiber: 30 watt fiber, air-cooled, includes collimator. 1064nm. Beam quality: M2 < 1.1. Dual: 60 watt CO <sub>2</sub> and 30 watt fiber. 100 watt CO <sub>2</sub> and 50 watt fiber	60, 80, 100 or 120 watt, CO <sub>2</sub> air-cooled, metal/ceramic tube, 10.6 micrometers	Fiber source is air-cooled, includes collimator. 1064nm. Beam quality: M2 < 1.1. Dual: 80 watt CO <sub>2</sub> and 30 watt fiber. 100 watt CO <sub>2</sub> and 50 watt fiber	80 or 120 watt, CO <sub>2</sub> air-cooled, metal/ceramic tube, 10.6 micrometers	Fiber source is air-cooled, includes collimator. 1064nm. Beam quality: M2 < 1.1. Dual: 120 watt CO <sub>2</sub> and 50 watt fiber	30 watt Pulsed, 30 Watt MOPA, or 60 Watt MOPA fiber laser
Software	Laser Dashboard™, Epilog Job Manager™						
Memory	Multiple files up to 1GB. Engrave any file size						
Motion Control	High-speed, continuous-loop, brushless DC servo motors on the x-axis using rotary encoding technology for precise positioning					--	
X-Axis Bearings	Ground & polished stainless steel, teflon-coated, self-lubricating bearings. Dual blocks on X-axis for greater rigidity					--	
Belts	Advanced B-style double-wide Kevlar precision drive belts					--	
Resolution	User-controlled 75-1200dpi						
Speed & Power	4.2m/s with 5g acceleration. Computer-controlled in .001 increments up to 100%. Color mapping feature links speed, power, frequency, & raster/vector mode					--	
Print Interface	USB, Wireless, & 10Base-T Ethernet connections. Windows 7/8/10/11 compatible						
Size (W x D x H)	1055x834x967mm		1359x833x1029mm		1794x1304x1086mm Pedestal removed: 863mm		711x584x787mm (door closed) 711x584x940mm (door open)
Weight	108kg		124kg		295kg		59.5kg
Electrical	Auto-switching power supply 110-240volts, 50 or 60Hz, single phase. 13 Amp draw-MAX for 120 volts. 6.5 Amp draw-MAX for 240 volts.			220-240volts, 50 or 60Hz, single phase. 6.5 Amp draw-MAX for 240 volts (50, 60, 80w). 10 Amp draw-MAX for 240 volts (120w).		110-240 volts, 50 or 60 Hz, single phase, 15 amp AC. 13 Amp draw-MAX for 100-120 volts. 6.5 Amp draw-MAX for 220-240 volts.	
Ventilation System	350-400CFM (595-680m <sup>3</sup> /hr) external exhaust to outside or internal filtration unit required. One output port, 102mm in diameter			Two upper output ports. One lower port. Total 735CFM. All ports 102mm diameter		450 CFM (765m <sup>3</sup> /hr) external exhaust to outside or internal filtration unit required. One output port, 102 mm in diameter.	
Class	Class 2 Laser Product - 1 mW CW MAXIMUM 600-700nm						

